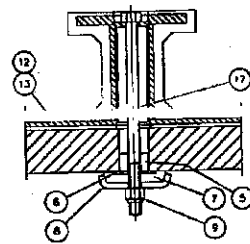


SECTION B-B

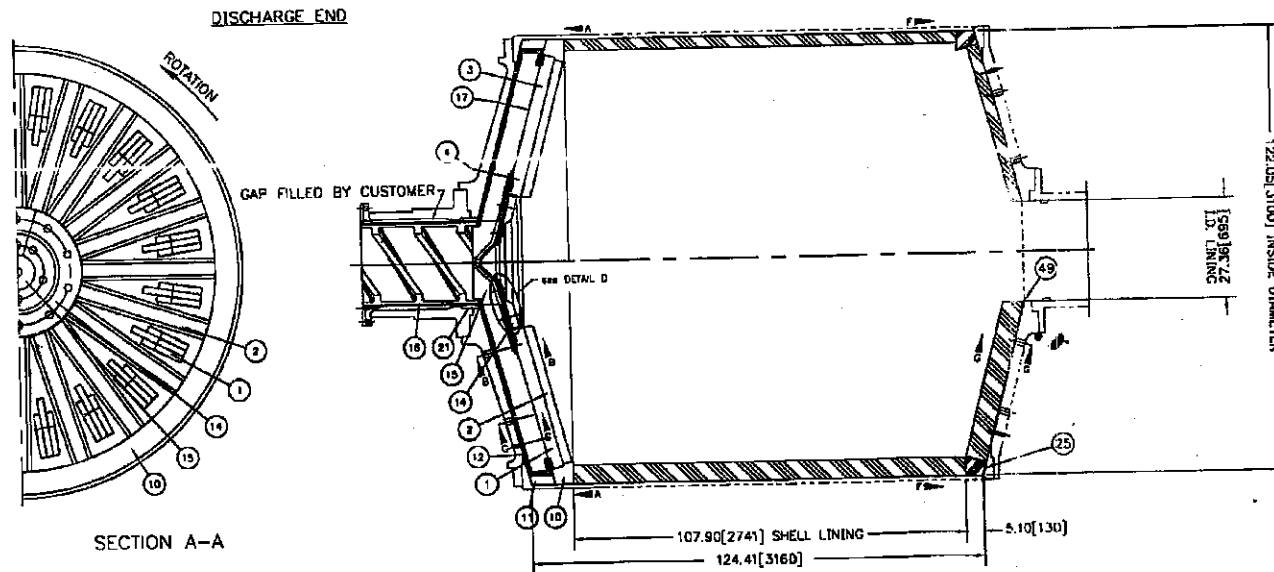


SECTION C-C

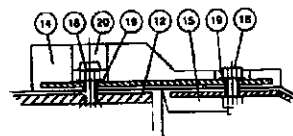
ITEM NO.	QTY. REQD	DWG. NO. PART NO.	DESCRIPTION	NOTES
		05-800073	DISCHARGE END LINING ASSEMBLY	94.7286
1	20	02-600076	GRATE PLATE 90GG	36.2858.102
2	20	02-600077	LIFTER BAR 140-135FX5	83.0676.102
3	21	02-600078	T-BOLT, 0.63UNC X 12.00 LG	21.9407
4	21	02-600079	T-BOLT, 0.63UNC X 13.00 LG	21.9408
5	42	02-600080	BUSHING	40.1430.25
6	82	04-800081	FLAT WASHER	20.0020
7	82	04-600082	SPACER	40.0005.124
8	62	04-600083	CUPPED WASHER	20.0021
9	65	04-600084	LOCKNUT 0.62UNC	25.0188
10	7	02-600085	FILLER SEGMENT	38.5583.169
11	8	02-600086	SUPPORT SEGMENT	38.5684.169
12	10	02-600087	PULP LIFTER (LONG)	39.4920.102
13	10	02-600088	PULP LIFTER (SHORT)	39.4921.102
14	1	02-600089	CENTER PLATE	39.4922.102
15	1	02-600090	CENTER CONE	39.4923.102
16	1	02-600091	TRUNNION LINER	39.4924.102
17	21	04-600092	BOLT 0.63UNC X 10.50 LG	25.8232
18	18	04-600093	BOLT 0.63UNC X 2.00 LG	25.8183
19	18	04-600094	LOCKWASHER	25.0366
20	18	04-600095	RUBBER PLUG 55 X 35	30.7350.106
21	1	02-600096	SPONGE RUBBER FILLER	89.0114.914

ITEM NO.	QTY. REQD	DWG. NO. PART NO.	DESCRIPTION	NOTES
		05-801832	FEED END LINING ASSEMBLY	
22	10	C02-808419	HEAD PLATE PLBC 3.15 THK	
23	10	B02-808420	LIFTER LF20-1 4.92 X 5.91 X 46.86	
24	10	B02-808421	LIFTER LF20-1 4.92 X 5.91 X 24.22	
25	6	A02-808422	FILLER RING 63.90 LG	
43	50	D2-800007	T-BOLT, 0.75 UNC X 5.50 LG	
44	50	D4-800023	WASHER CUPPED TB20	
45	50	D4-075962	WASHER SEALING	
46	50	U4-024849	NUT, HEX 0.75-10UNC	
49	10	02-804211	TU-1 LIFTER INSERT 6.00 LG	

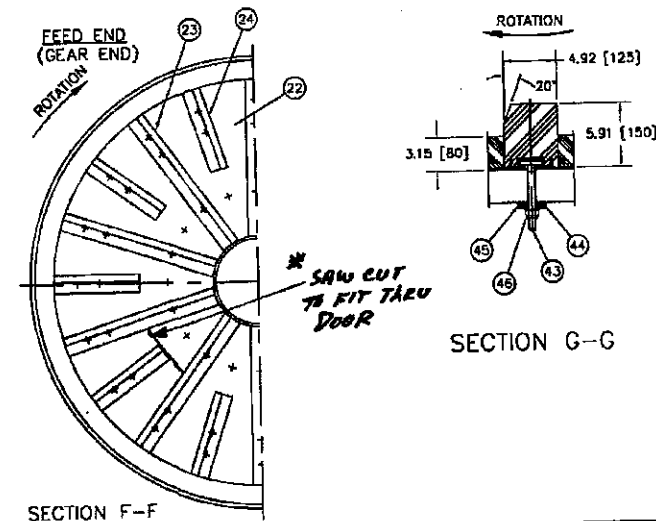
Note! RECOMMENDED TORQUE FOR LOCKNUTS AND BOLTS
5/8" UNC - 70 f/lbs = 100 Nm



SECTION A-A



DETAIL D



SECTION F-F

SECTION G-G

REVISIONS A REVISED PART NOS ITEM 43 & 46; REV DESC ITEM 2; SEE SHEET 2 OF 2 BY: [] DATE: []	
MATERIALS AND FABRICATING DIMENSIONS ALL DIMENSIONS IN MILLIMETERS UNLESS OTHERWISE NOTED. ACCUMULATIVE TOLERANCES NOT PERMISSIBLE. ALL DIMENSIONS UNLESS OTHERWISE SPECIFIED.	MACHINING DIMENSIONS ALL DIMENSIONS IN MILLIMETERS UNLESS OTHERWISE NOTED.
2 PLACES = 4 1/2" (114) 3 PLACES = 6 1/2" (165) 4 PLACES = 8 1/2" (216) 5 PLACES = 10 1/2" (267) 6 PLACES = 12 1/2" (318) 7 PLACES = 14 1/2" (369) 8 PLACES = 16 1/2" (420) 9 PLACES = 18 1/2" (471) 10 PLACES = 20 1/2" (522)	2 PLACES = 4 1/2" (114) 3 PLACES = 6 1/2" (165) 4 PLACES = 8 1/2" (216) 5 PLACES = 10 1/2" (267) 6 PLACES = 12 1/2" (318) 7 PLACES = 14 1/2" (369) 8 PLACES = 16 1/2" (420) 9 PLACES = 18 1/2" (471) 10 PLACES = 20 1/2" (522)
NYHAMMAR 3100 X 3300 GDBM	SVEDALA® Svedala Mill Lining Svedala Industries, Inc. 240 Arch St., P.O. Box 15312 York, PA 17405-7312 USA
10-99 RECMX	DWG NO: 05-801832 D REV: 1-16 05-801832 1 OF 2